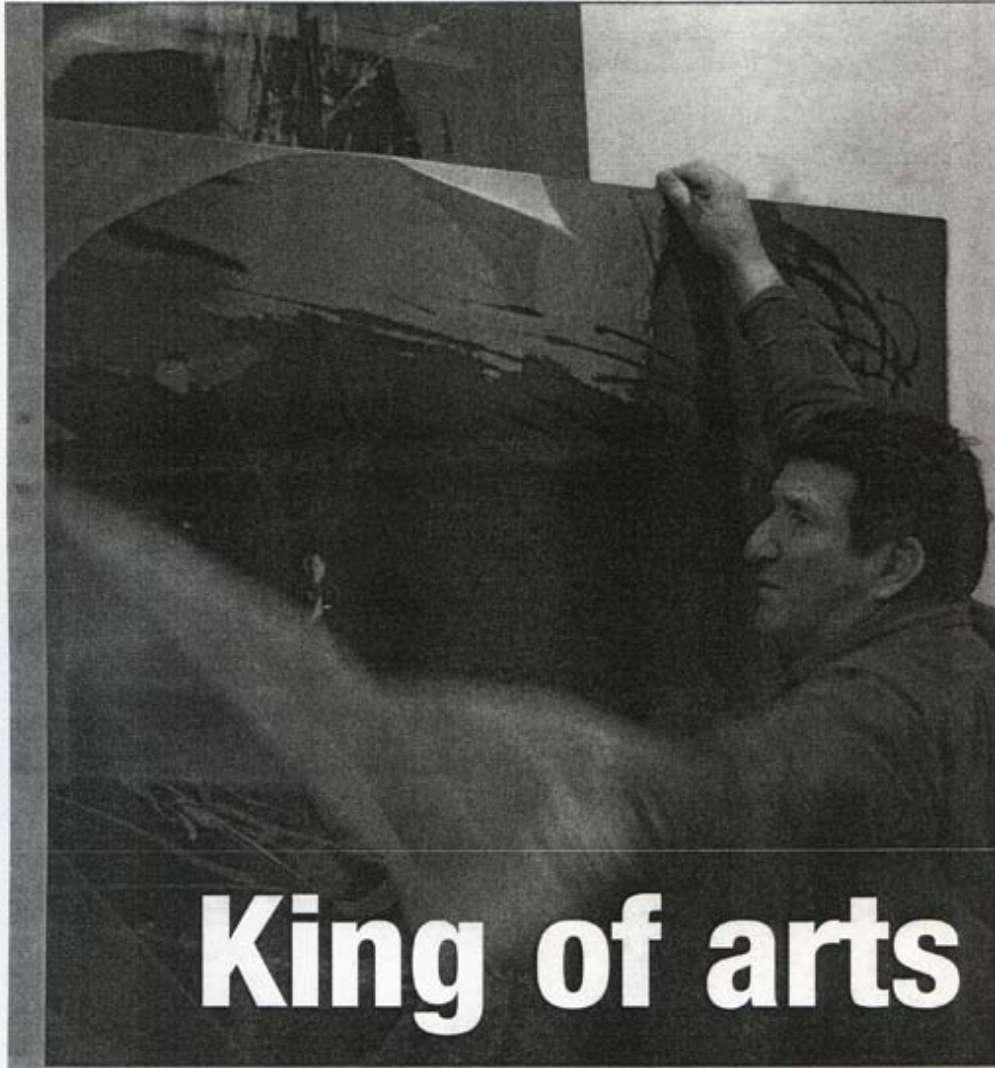
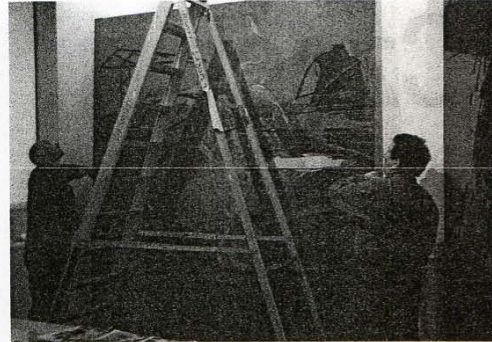


TANYA LEIGHTON

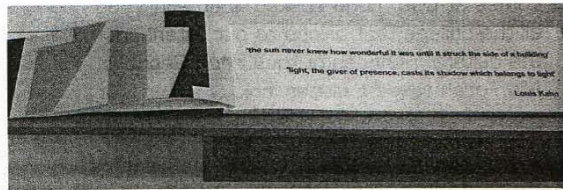
# ARTS extra





# Work in progress

Former St Martins School of Art alumni Bruce McLean has been a popular figure on the contemporary art scene for many decades. He is currently exhibiting an ever changing collection of work at both the Chelsea College of Art and Tate Britain. **Mo Farah** and **Matilda Eriksson** find out more....



University of the Arts, London has a long held tradition of students going on to high accomplishments in the art world. After studying at



St Martins School of Art in the '60s, Bruce McLean went on to influence and inspire the art world across the board with his sculpture, performance art, painting and architecture.

He is currently exhibiting Process Progress Project Archive 1966-2006 at Chelsea College of Art's Chelsea Space and concurrently at Tate Britain.

This exhibition looks back on four decades of work to date while looking into art's crystal ball of future trends.

As one of the pioneers of conceptual art McLean emerged in the early '60s to challenge and question traditional media and cultural conventions.

McLean turned increasingly to conceptual thought and performance art at the beginning of the '70s. Together with friends and fellow artists McLean also formed the world's first posse band Nice Style. The group staged 'pose performances' on various occasions to expose the pretentiousness of the art world.

From the '80s onwards, McLean focused on painting but was also been involved in architectural projects where he combines art and architecture.

Depending on what day of the week you attend, the exhibition is in constant flux so the

viewer can expect to have a different experience on every occasion. McLean's retrospective is thoughtfully planned and connects the present and the past by ending on the same day as his earlier 1972 retrospective at the Tate gallery. His unique approach involves the gradual unveiling of his art during a six-week period. He then individually installs, discusses, listens to, watches and even performs some of his work.

His exhibit at Chelsea Space can only be described as organized chaos, hosting a vast collection of posters, paintings, films, prints, photographs, and other ephemera.

Due to the nature of the display, McLean has most of his work in piles ready to put up as he wishes. With the help of Donald Smith—director of exhibitions, and various other assistants, McLean draws on his artistic essence to decide how to perform or display his next batch of work.

Speaking to LCC News, McLean chose his King for a Day retrospective as his favourite collection: "That was when I gave up art for five years and that gave me a kind of release," he told us.

He also revealed that, although he is eternally busy with his ever-changing exhibition,

he still finds time to assess various aspiring artists' works.

"As an artist, I can appreciate other artists' work and also be critical." The exhibition's ongoing collaborations include artist Eddie Farrell, who will be making an audio and visual recording of McLean and his actions throughout.

There is also a special closing event on Saturday March 11 between 12pm-4pm to mark the anniversary of King For A Day

**The exhibition showing at Chelsea space, Chelsea College of Art & Design, John Islip Street, London, SW1. Tuesday - Friday 11am - 5pm, Saturday 10am - 4pm.**

Above: Shadows - a artist's book by McLean launched on Tuesday  
Left: pieces of McLean's work on display  
Far left: The Fallen Warrior 1969 is one of his work which was commissioned by Granada

television for the Collaboration Arts programme  
Top left and right: Bruce McLean at work at Chelsea



FEATURE

