

Tanya Leighton

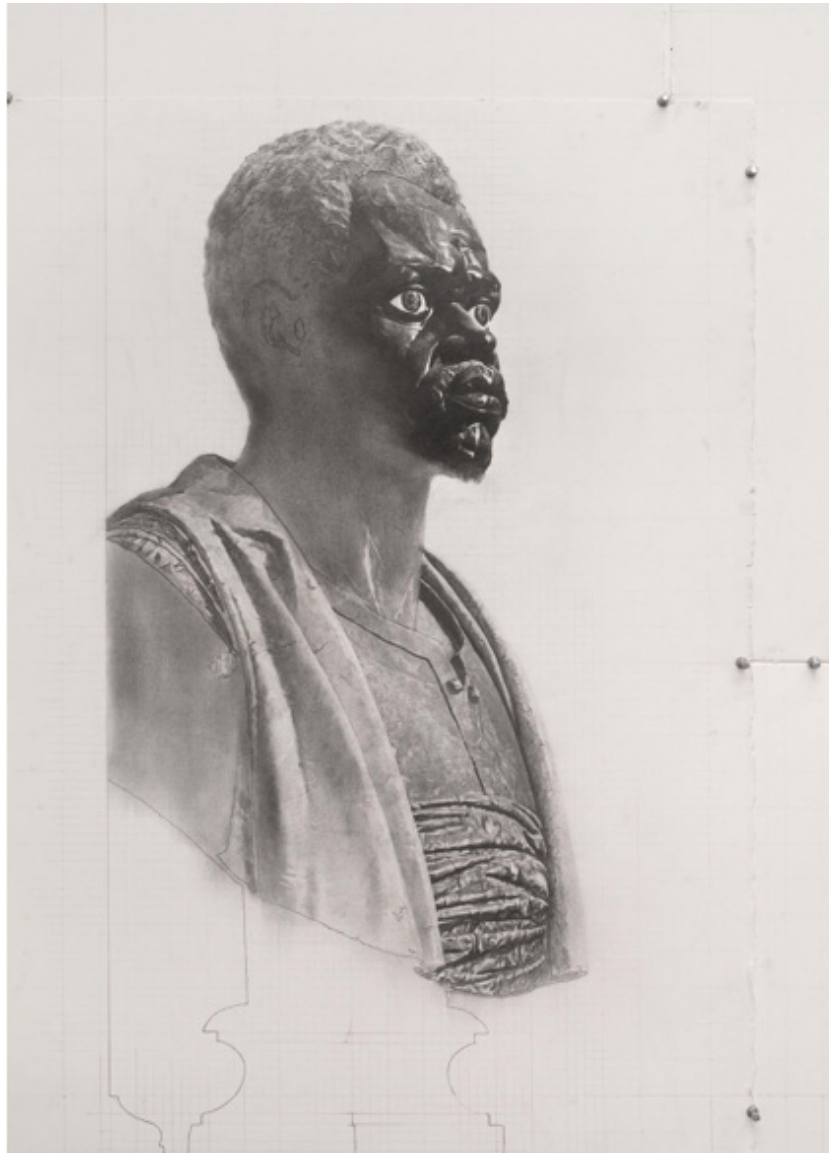
## FRIEZE

### What to See During Los Angeles Gallery Weekend

From the Frieze Viewing Room, Los Angeles Edition, an online fair featuring the city's leading galleries, to Pia Camil's termite-nest sculptures, these are the must-see LA shows

T

BY TERENCE TROUILLOT IN CRITIC'S GUIDES | 26 JUL 21



Esteban Jefferson, *Gratuité*, 2021, graphite on watercolor paper, 184 × 146 cm. Courtesy: the artist and Tanya Leighton, Los Angeles; photography: Dan Finlayson

Frieze, July 2021

Kurfürstenstraße 156, 10785 Berlin

+49 (0)30 21 972 220, [info@tanyaleighton.com](mailto:info@tanyaleighton.com), [www.tanyaleighton.com](http://www.tanyaleighton.com)

# Tanya Leighton

## **Esteban Jefferson**

**Tanya Leighton**

**17 July – 14 August**

At Tanya Leighton, New York-based artist Esteban Jefferson presents a selection of works from his series 'Petit Palais' (2019–ongoing) – beautifully rendered compositions that depict the reception area inside the Beaux-Arts rotunda of the Petit Palais Museum in Paris. Marked by two sculptural busts of Black subjects located behind the reception desk in the entrance – as if only tangentially part of the museum's collection – the scene is meticulously re-created by Jefferson, who brings into focus these peripheral works while blurring out the surroundings: museum attendants, visitors, counters, computers, etc. In this recent iteration, however, Jefferson forgoes his use of paint and canvas, drafting a selection of works on paper that sees these busts rendered in deep black and their environment faintly drawn in pencil – a ghost image of the space itself. The drawings are tacked to the wall in a grid-like formation, lending the display a gritty look that contrasts starkly with the ethereal, washed-out scenes of Jefferson's paintings. Here, the drawings are simple and raw, almost aggressively stripping out the mundane and loudly calling attention to these objects as valuable artworks – not marginal, decorative pieces reminiscent of a colonial past.

Kurfürstenstraße 156, 10785 Berlin

+49 (0)30 21 972 220, [info@tanyaleighton.com](mailto:info@tanyaleighton.com), [www.tanyaleighton.com](http://www.tanyaleighton.com)