

Tanya Leighton

FRIEZE

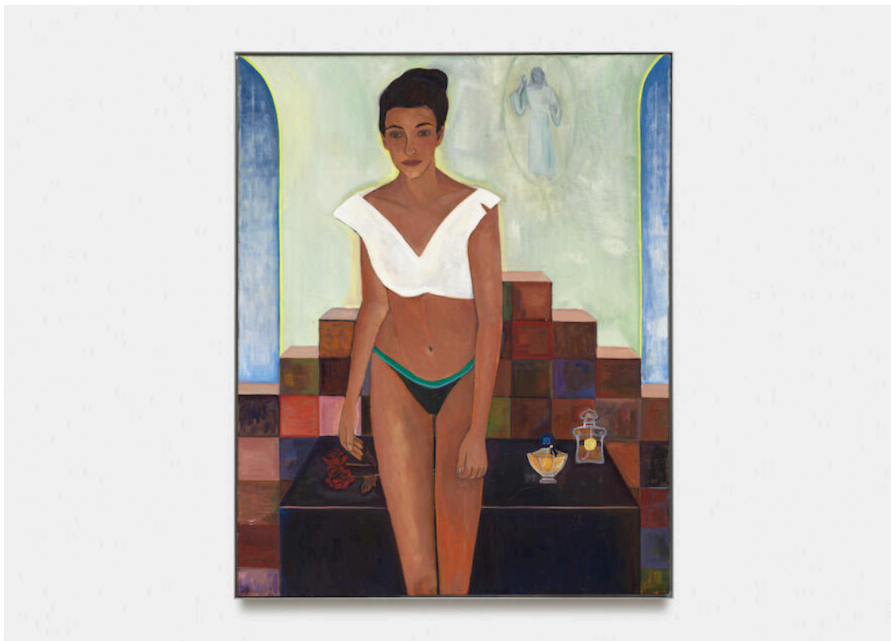
IN FRIEZE LONDON | 27 SEP 24

Cultural Capital: London-based Artists at Frieze London 2024

Discover experimental artists from near and far who have made London their home, including Alvaro Barrington, Claudette Johnson, Jasleen Kaur and Lucía Pizzani

Every October, **Frieze London** draws the international art world to the UK capital to celebrate its vibrant creative landscape. Across solo and curated shows, the fair introduces new voices from the city including Appau Jnr Boakye-Yiadom, Simone Kennedy Doig, Georgina Hill and Jaime Welsh.

Simone Kennedy Doig and Matthew Krishanu with Tanya Leighton (B39)



Simone Kennedy Doig, *Maggie*, 2023. Oil on canvas, 1.5 × 1.2 m/ Courtesy: the artist and Tanya Leighton. Photo: Gunter Lepkowski

Featuring two London-based artists, Tanya Leighton's group show asks how identity is sustained and transformed through cultural memory. Simone Kennedy Doig lived in East London until the age of eight, when her family moved to Port of Spain, Trinidad. In her latest paintings, Kennedy Doig explores the visual cultures of both cities, portraying snatched reminiscences, moments in bars, on streets, in bathrooms and beside pools, often centring around connections between women. Matthew Krishanu also reflects on the formative experiences of his childhood, having grown up on a Christian mission in Dhaka, Bangladesh. Leaning into the intimacy of family photographs – portraying lived and imagined scenes – Krishanu's softly worked paintings reference colonial legacies, the ramifications of imperialism and the church's temporal conditioning of bodies.

Frieze, October 2024

Kurfürstenstraße 156, 10785 Berlin
+49 (0)30 21 972 220, info@tanyaleighton.com, www.tanyaleighton.com